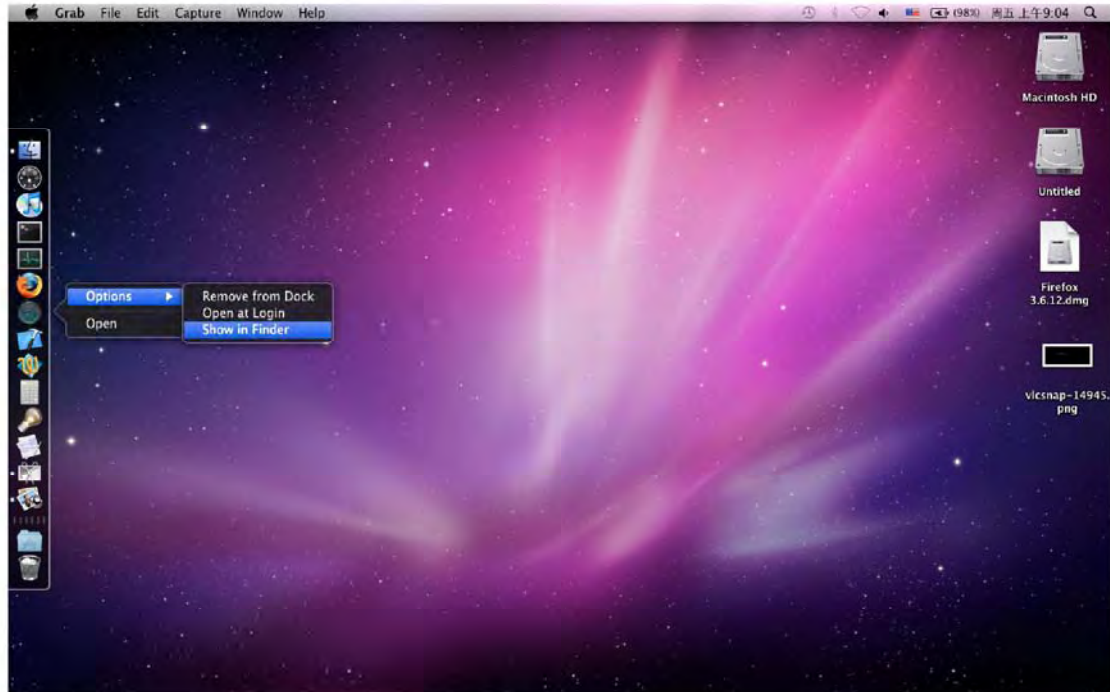


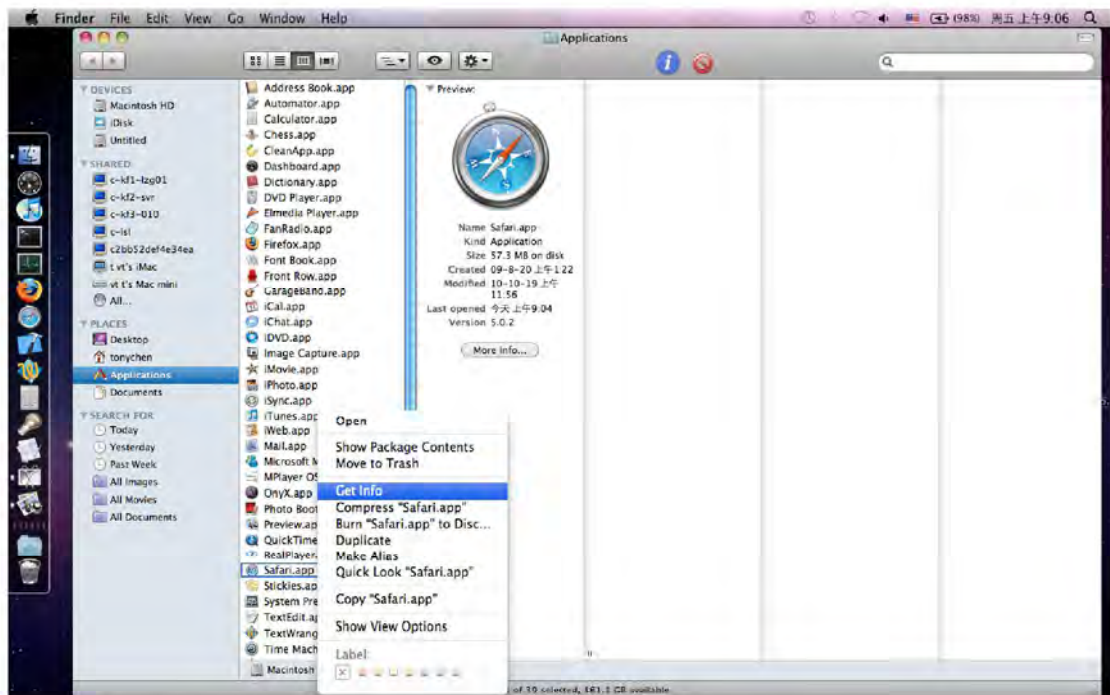
# Instruction of the Safari Client Installation

**NOTE: For ED6900HE and ED6900FD, the firmware version must be 3.1.75 or higher.  
If not, please contact with us.**

1) Since the current client plug-in can only be run in 32-bit, so the Safari browser needs to be set to run in 32-bit. Please follow below steps:



1. Right click on Safari, click “Show in Finder”



2 · Right click on Safari in Finder, and click “Get Info” in the menu.

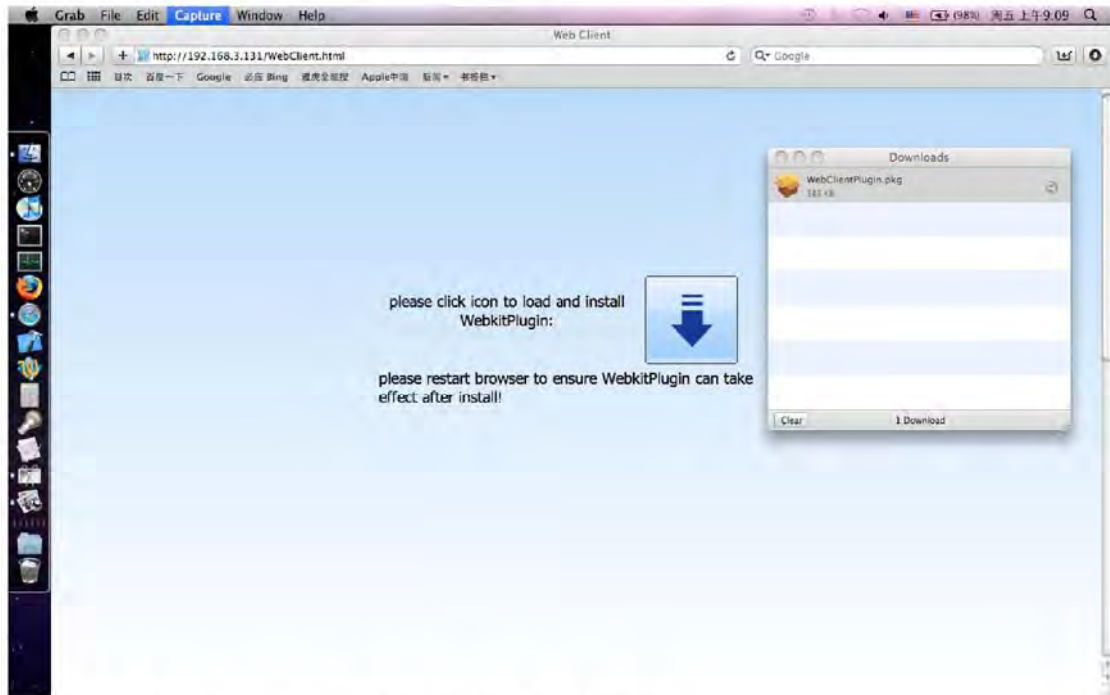


3 · Then the Safari's info window will pop up, please check the option for "Open in 32-bit mode".

2) Please follow below steps to download and install the plug-in :



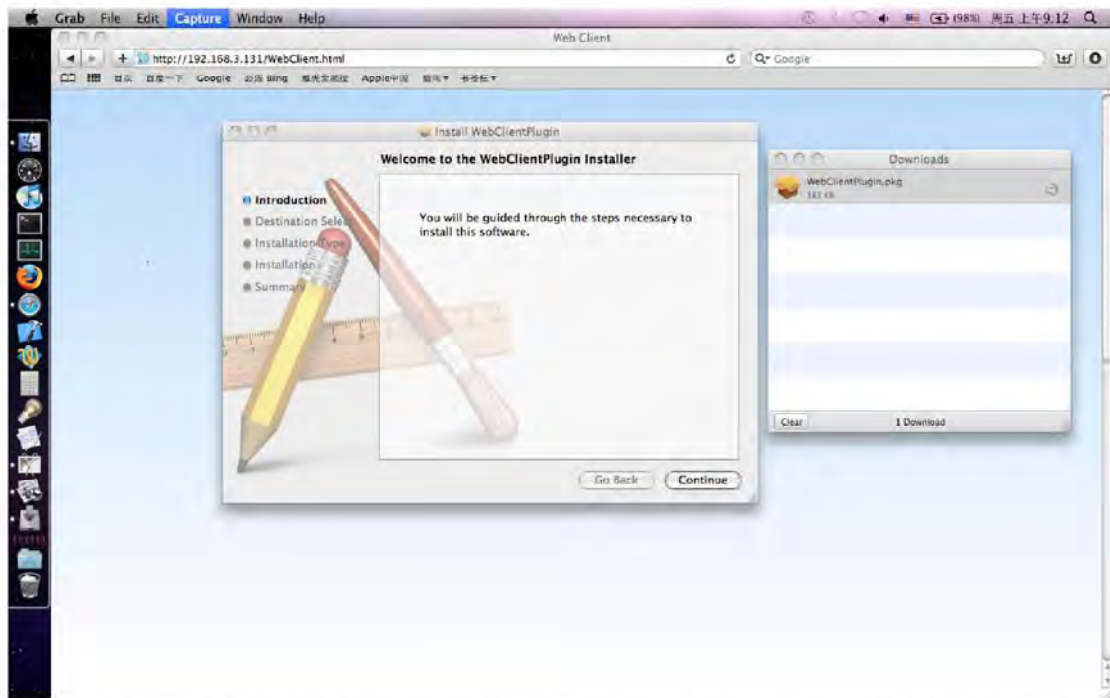
1 · Open Safari browser, input the device's IP address, it will display the download interface of the plug-in when visit the DVR for the first time or the firmware version has been changed.



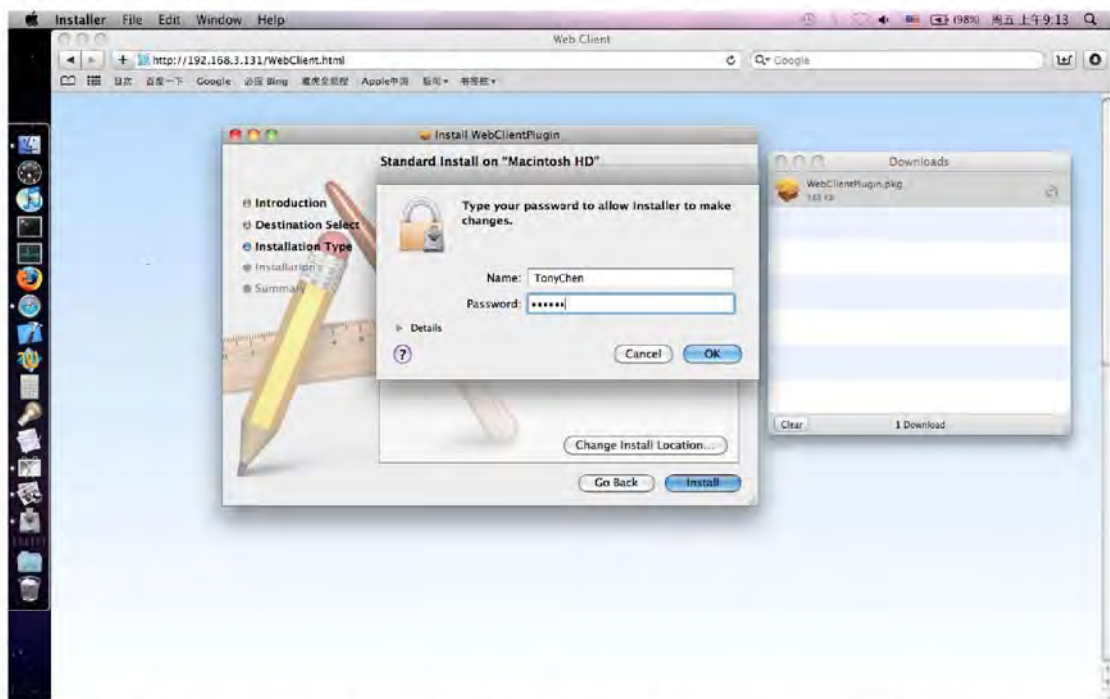
2 · Click the icon to download the installation package.



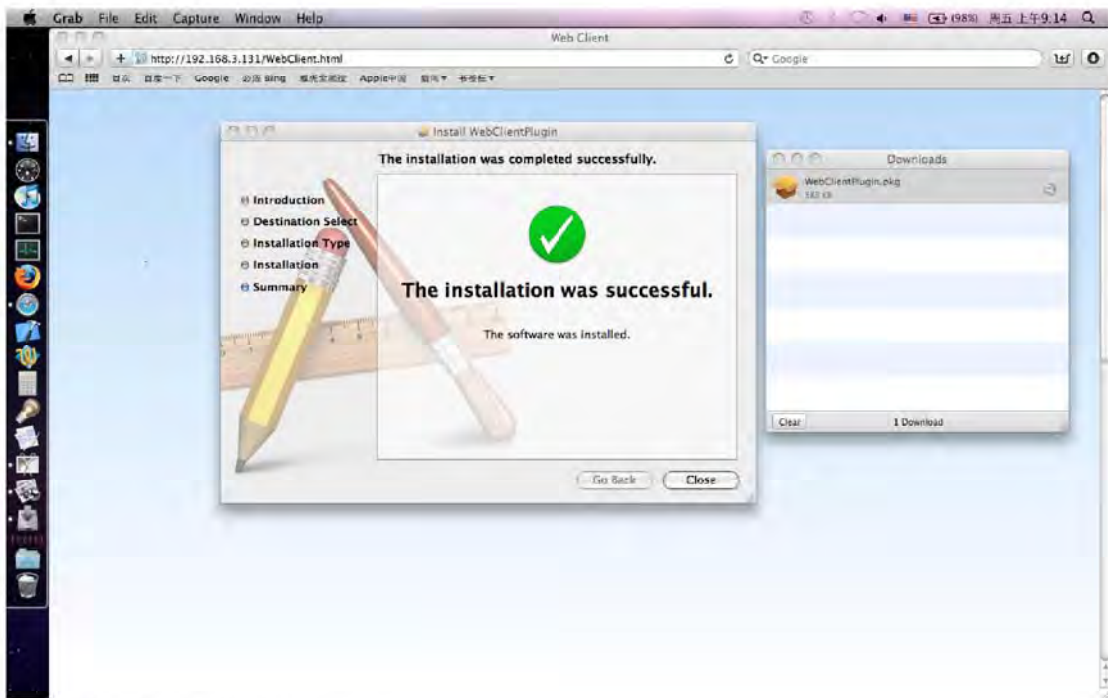
3 · If the download window didn't pop up automatically, you can click the "Downloads" in the "Window" menu of the browser.



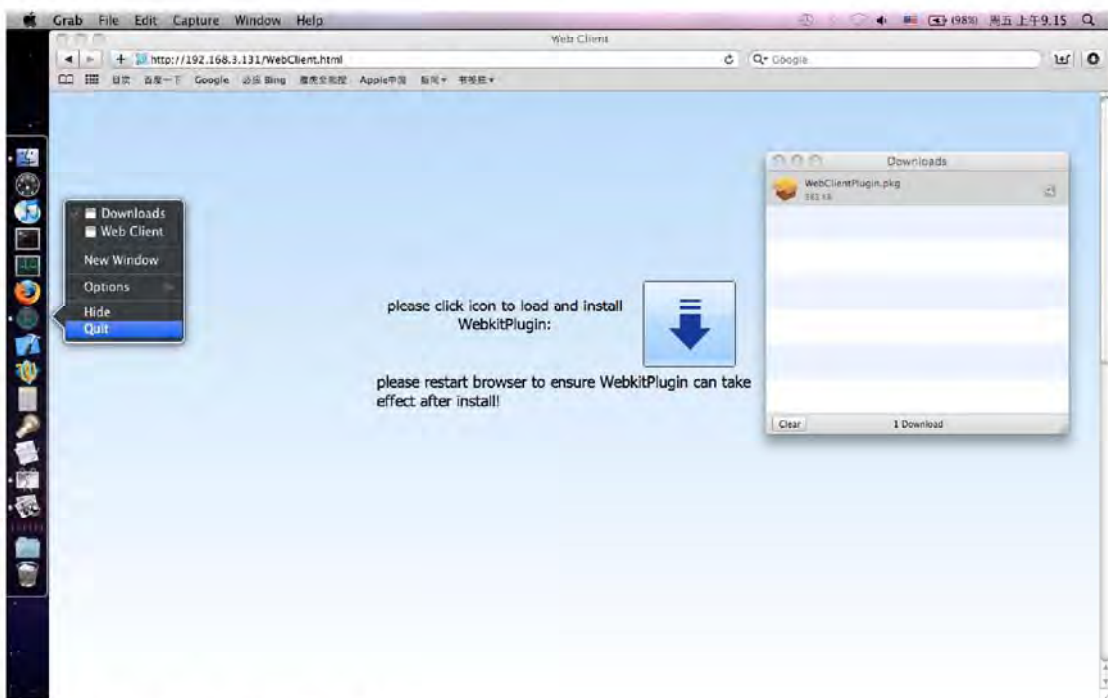
4 · Double click the downloaded package, click “Continue”, keep clicking on “Next” with the default settings.



5 · It will ask you to input the administrator’s username and password in the installation.



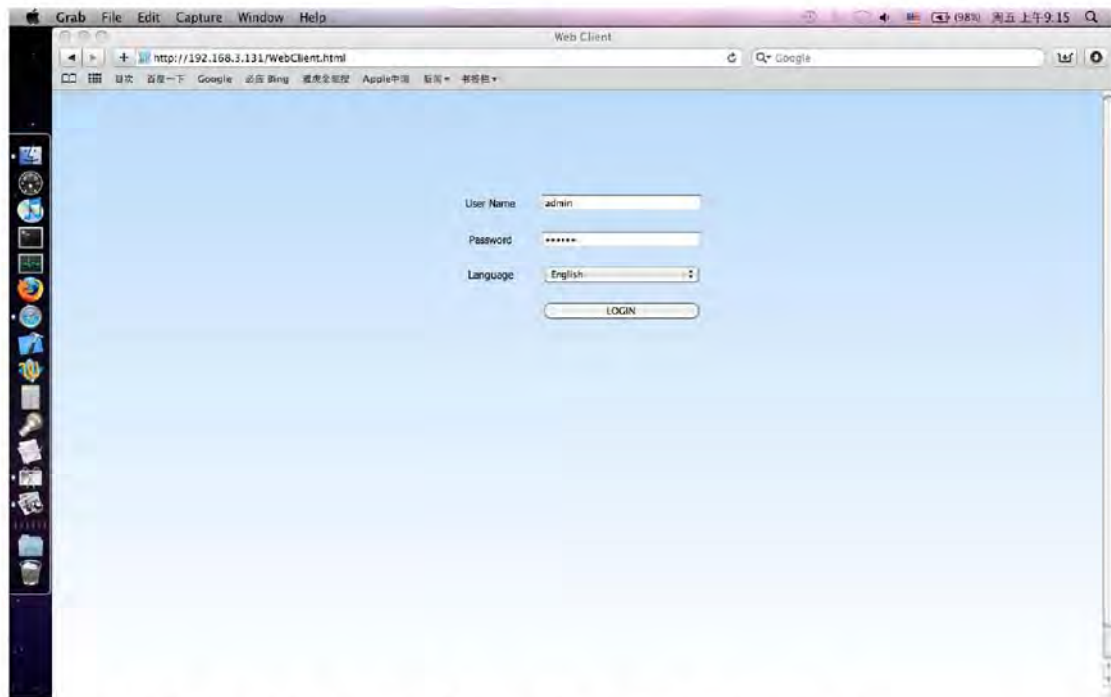
6 · Installation completed.



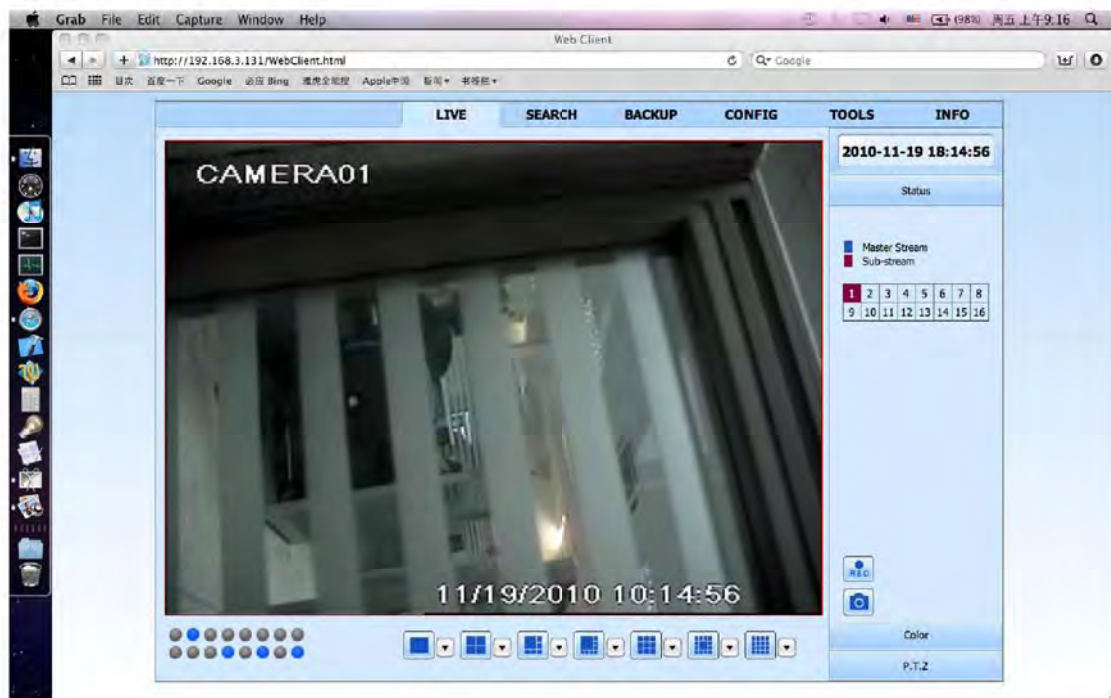
7 · Right click on Safari, click "Exit"

Notice : The plug-in will get to work only when you exit the browser and run again.

3)Run, please follow below steps :



1 · Open Safari; input the device's IP address, username and password.



2 · Login succeeded, then you can do the operations just the same as in IE.

Testing Environment : Mac OS 10.5 and 10.6, Safari 4.X and 5.X